

Stepping towards **25**  
years  
of Excellence





 N  
Site Layout

	North
	East
	South
	West







## SPECIFICATION

Structure	RCC frame structure up to basement level. 9" brick for external walls & 4.5" thick for partition wall.
Flooring	Vitrified tiled flooring.
Plastering	Cement plastering in ceiling, inner & outer walls with neat finish
Main door	Seasoned teak wood polished frame with polished teak wood shutters.
Other doors	Seasoned country wood polished frame, hard core flush doors with veneer polished finish.
Window	Seasoned country wood frame & shutters with enamel paint finish.
Kitchen	Granite table top with stainless steel sink.
Toilet	Branded white sanitary ware fittings with 7' ft height tile dadoing.
Staircase	Granite steps with grill wooden hand rails.
Painting	Interior walls painted with lustre finish with putty & external wall painted with emulsion finish. The colour choice in both areas will be as per the architect's scheme.
Electrical	Good quality switches with ELCB & MCB for each unit- adequate light point , fan point, power point, telephone point, T.V point and A/C points.



N  
→ East Facing Villa

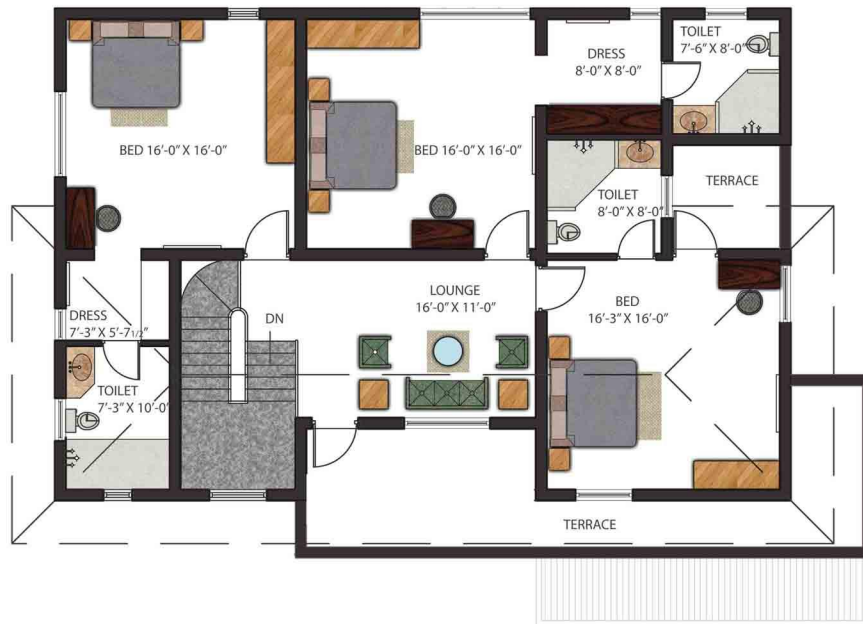
Ground Floor
2084 sqft
Optional



N  
→

East Facing Villa

First Floor
1696 sqft
Total Area - 3780 sqft



N  
← West Facing Villa

Ground Floor
2190 sqft
Optional



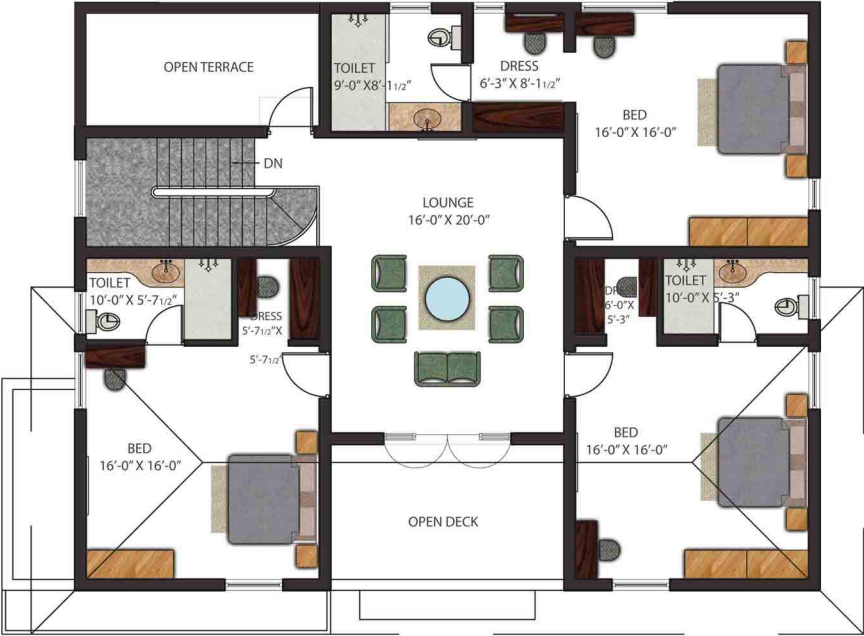


N

←

West Facing Villa

First Floor
1911 sqft
Total Area - 4101 sqft





## FACILITIES

48 individual bungalows

Near TEA public school

Off Tirupur to Avinashi main road

Well designed spacious rooms

Well landscaped Garden space

Club house with modern amenities

Swimming pool

24 hours security

Covered parking for 2 cars

Water supply through Hydropneumatic systems

Aesthetic paver block roads

Generator backup for common amenities

Under Ground cable system



Location Map



## North Facing Villa

Ground Floor
2084 sqft
Optional



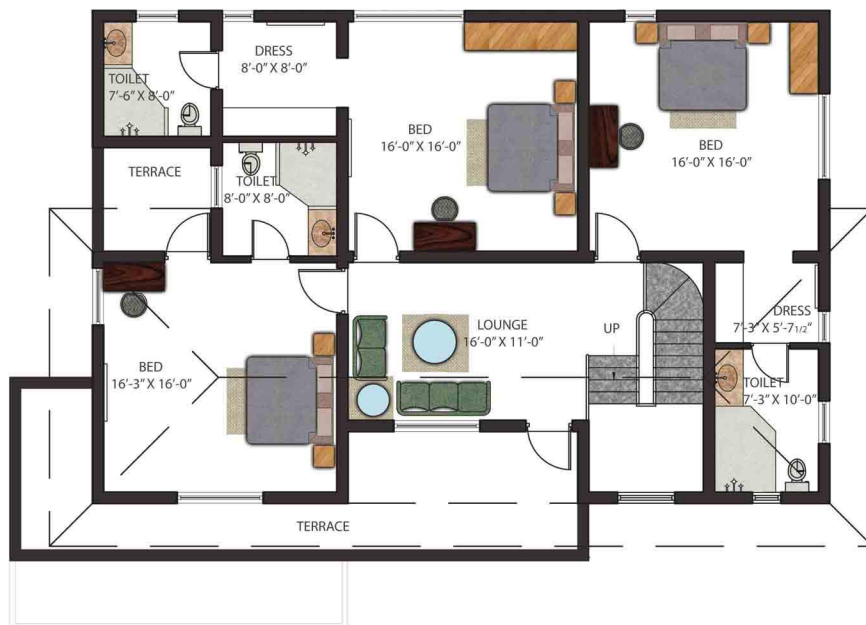


N

↓

North Facing Villa

First Floor
1696 sqft
Total Area - 3780 sqft





## South Facing Villa

Ground Floor

2190 sqft

Optional



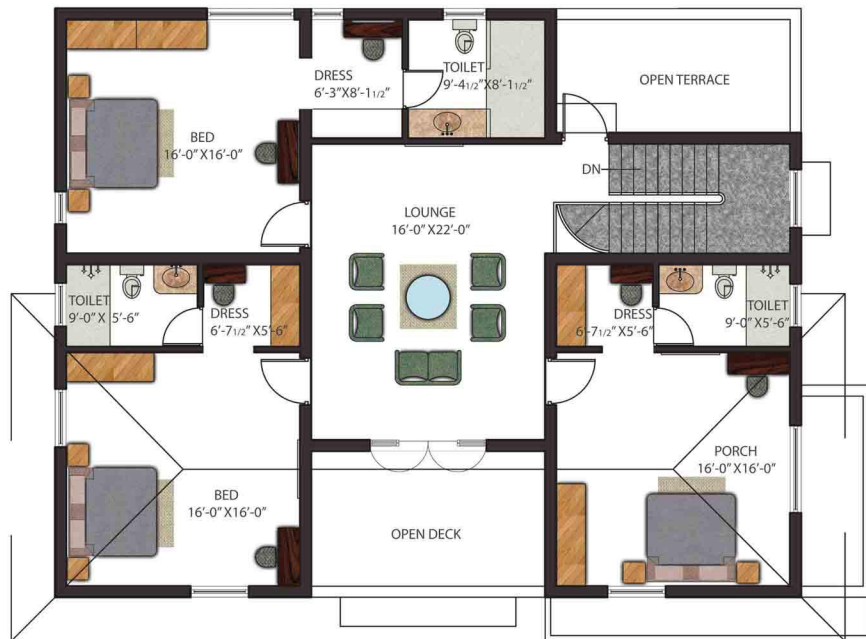


## South Facing Villa

First Floor

1911 sqft

Total Area - 4101 sqft

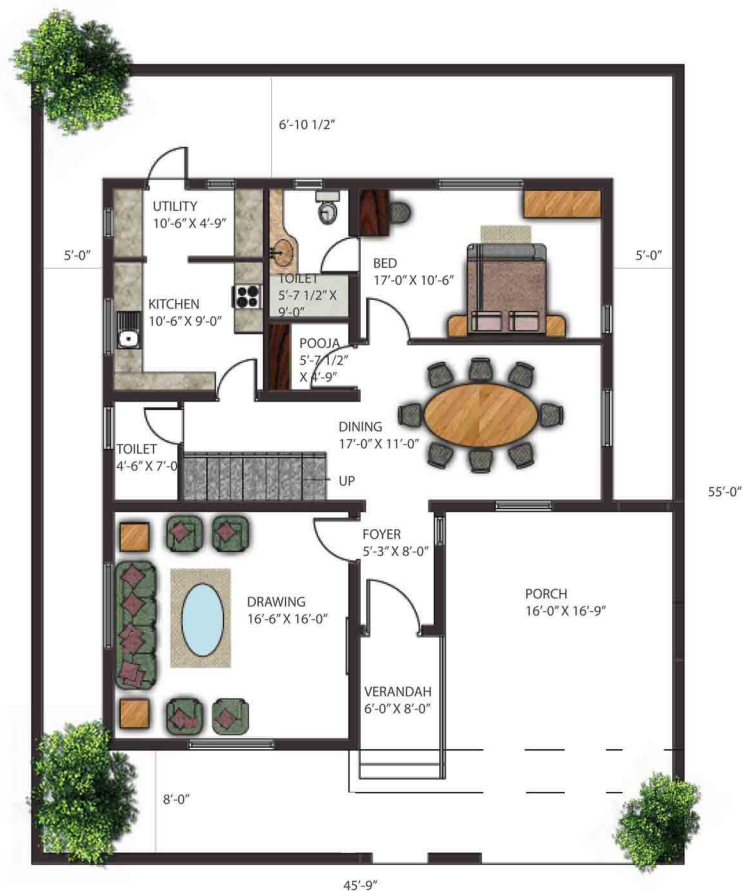




## South Facing Villa(2)

Ground Floor

1593 sqft





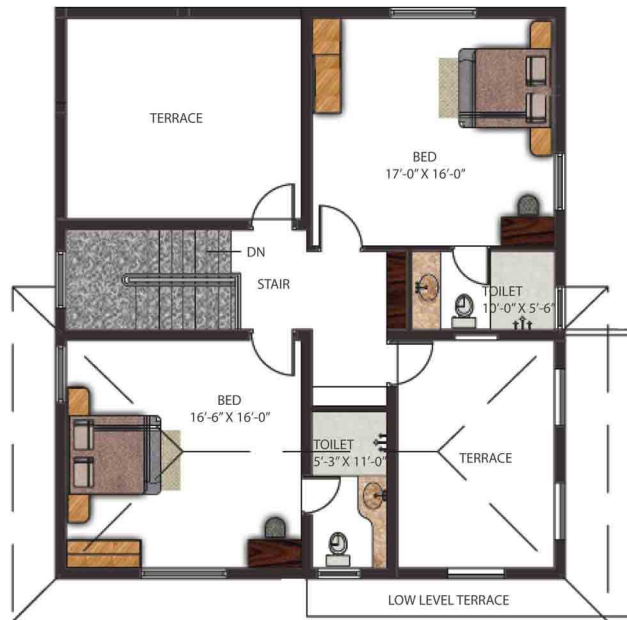


## South Facing Villa(2)

First Floor

1200 sqft

Total Area - 2793 sqft









## K.R.C Housing & Infrastructure Company

#7 Gandhi Nagar, 3rd Street, Tirupur – 641 603  
Tel: 0421 – 2479368, 2470398, Fax: 2470194  
Email: [krshantiniketan@gmail.com](mailto:krshantiniketan@gmail.com)  
Web: [www.krcproperties.in](http://www.krcproperties.in)

---

Architects & Planners

Sankar and Associates  
Coimbatore



*All information and images contained herein are for reference only. Details are subject to change without notice, and no claim herein warrants a contractual or other obligation. This document or any of the materials herein may not be reproduced without express written consent of K.R.C Housing & Infrastructure Company*